

TABLE OF CONTENTS:

LUMINAIRE SPECIFICATIONS	3
LUMINAIRE INSTALLATION PROCEDURE	4
CAUTIONS AND WARNINGS	5
PRODUCT GUARANTEE & WARRANTY	8



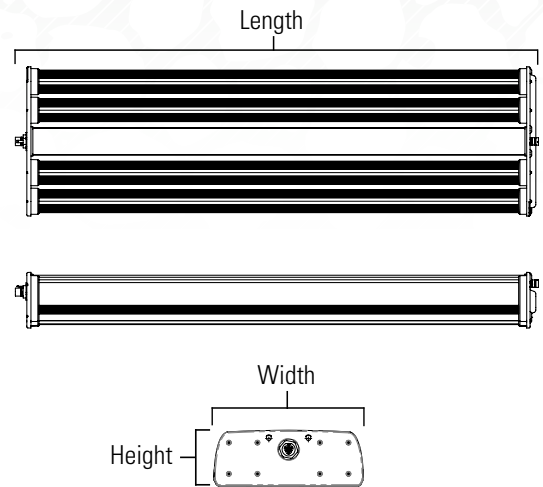
THIS PAGE INTENTIONALLY LEFT BLANK

LUMINAIRE SPECIFICATIONS

Spectra	Power	Length	Width	Height	Weight
Broad R4	1020W	39.6" [1 m]	14.6" [37 cm]	4.1" [10,5 cm]	32 lbs [15 kg]

INTENDED INSTALLATION ENVIRONMENT:

Max. Ambient Temperature	45°C [113°F]
Environmental Rating	IP66* rated; RH <90% non-condensing
Input Voltage	277V-480V~, 50/60Hz for America 277V-400V~, 50/60Hz for Europe
Dimming	Source Signal Driver, 0/1-10V, OFF/10-100%



REGIONAL COMMERCIAL CODE LEGEND

FAMILY	REGION	SPECTRUM	WATTAGE	DISTRIBUTION	INPUT VOLTAGE	CONNECTOR	PACKING
RP RAPTR	C GLOBAL A USA	BW4 BROAD R4	1K 1020 WATT	STD 120° LAMBERTIAN 150 150° WIDE	JVG 277-480 VAC	RST WIELAND (RST20i3 Gr)	S Single

AC POWER CABLE CONNECTIONS

Americas AC Cable Wire Colors	International AC Cable Wire Colors	Power Supply Pin Connection	277 V	347 V	400 V	480 V
Black	Brown	1	Phase	Phase	Phase	Phase
White	Blue	2	Neutral	Neutral	Phase	Phase
Green	Green-yellow	G	PE	PE	PE	PE

NOTE: In 3-phase power applications, the light fixtures/loads should be properly distributed across all three phases, and not all on the same phase.

0-10 V DIMMING SIGNAL CABLE CONNECTIONS

Dimming Cable Wire Color Americas	Dimming Cable Wire Color International	Power Supply Pin Connection
Red	Black	DIM (+)
Black	White	DIM (-)
Bare Wire	Bare Wire	Shield Drain (not connected to fixture)

NOTE: Connect the dim cable shield drain to only one PE ground connection point, i.e. at the dimming control panel.

DIMMING SPECIFICATIONS

Dimming Input	Source Signal Driver, 0-10 V, Dim to Off
Dimming Range	Off: 0-9%, Dimming:10-100%, Linear
Typ / Max Source Current @ Vdim=0V	300 µA/ 400 µA
Voltage @ Full load	10 V
Voltage Dim to OFF	0.8 V
Voltage Dim to ON	1.0 V
Hysteresis (V / %)	0.2 V / 2 %

SYSTEM SPECIFICATION SHEETS

For complete product information and system specifications please visit

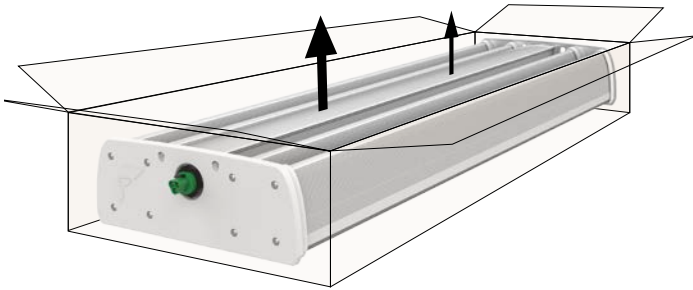
<https://fluence-led.com/support-center/>

or email support@fluence-led.com

LUMINAIRE INSTALLATION PROCEDURE

IMPORTANT: For your protection, you must carefully read all warnings and instructions entirely PRIOR TO installation, operation, service or maintenance. Failure to do so can result in personal injury and property damage.

- 1** Remove unit from carton and inspect to ensure no shipping damage has occurred.




- 2** Place unit on the floor with the LED optic chamber facing up.



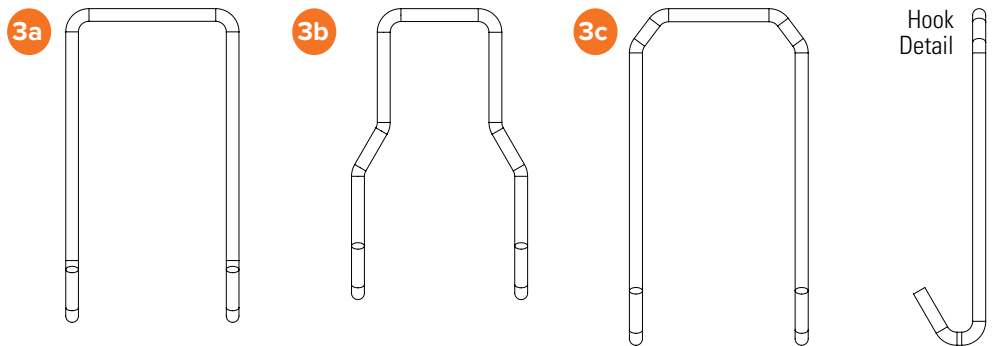
! DO NOT place luminaire facing down to prevent damaging optics.

- 3** Determine mounting bracket type needed (sold separately) and install on frame as outlined below. Note that the luminaire should be positioned so that prolonged staring into the luminaire at a distance closer than 2.2 m is not expected.

 --m | The minimum distance from lighted object is 0.2 m.

BRACKET TYPES

- 3a** Square mounting type for 70 mm truss
- 3b** Unistrut mounting type for 40 x 40 mm
- 3c** Universal mounting type



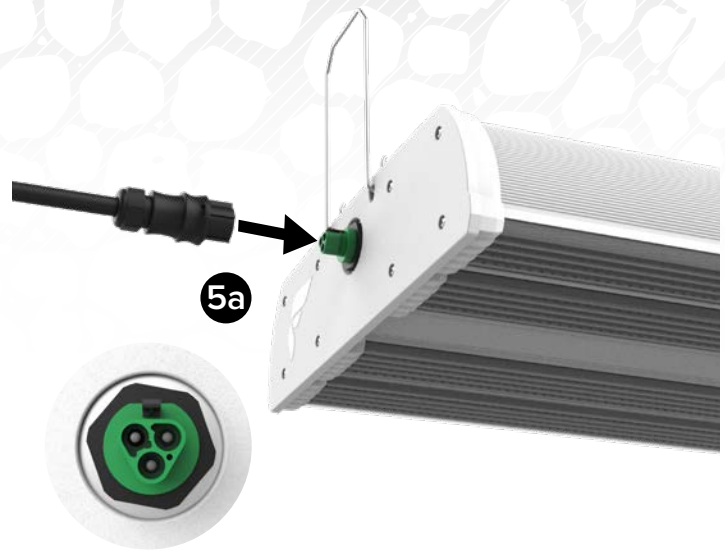
- 4** Hook the mounting bracket to each end of the luminaire in the holes located at each end.



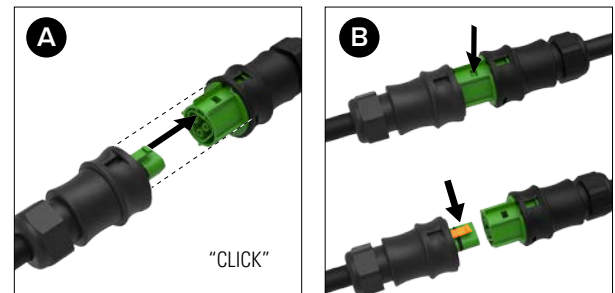
LUMINAIRE INSTALLATION PROCEDURE

5 Make electrical connection using AC power cable through the Wieland connector on the luminaire.

- A.** To attach the connector, match up the keyed pins (male to female) and push it on until you hear a “click”. Check that the connector is securely attached. The connector will not come off if properly installed. Failure to test the cable connection may result in electrical shock or damage to the product.
- B.** To remove the connector, use a flat head screwdriver and press on the latch while turning the screwdriver to release the latch, and then pull the connector straight out.



NOTE: Fluence recommends the use of AC circuit contactors to completely disconnect the facility AC voltage from the luminaire to mitigate potential glowing or dimming interruptions of the crop dark period. For more information, please download the Dim-to-Off Application Note available at the Fluence Support Center <https://fluence-led.com/support-center/>.



CAUTIONS AND WARNINGS

⚠️ CORD AND CABLE GUIDELINES:

1. Do not conceal or extend through a wall, floor, ceiling, or other parts of the building structure;
2. Do not locate above a suspended ceiling or dropped ceiling;
3. Do not permanently affix to the building structure;
4. Route so that cords are not subject to strain and are protected from physical damage;
5. Are visible over their entire length; and
6. Are used within their rated ampacity as determined for the maximum temperature of the installed environment specified in the instructions.

⚠️ SERVICIBILITY GUIDELINES:

The light source of this luminaire is not replaceable; when the light source reaches its end of life the whole luminaire must be replaced.

⚠️ WARNING

Turn off and disconnect the power before installation. Installation should be performed by a qualified electrician in accordance with all national and local electrical and construction codes and regulations.

- DO NOT attempt to install or use this product until you have fully read and understand the installation instructions contained in this user and installation guide and on the product safety labels. Failure to follow the Fluence product instructions and safety label advice may result in damage to the product, damage to property, or personal injury. Be sure to retain a copy of this user guide after installation for future reference.
- Risk of Electrical Shock. Turn off and disconnect the power before installing, moving, or cleaning to reduce the possibility of serious injury. DO NOT disconnect cables from the power supply or LED light bar while energized.
- Only connect the system to an electrical outlet or circuit of appropriate type and rating for the cord and plug. Connect the system only to power sources of the correct voltages and frequencies listed in the product specifications.
- Protect power cables from being pinched, walked on, or otherwise damaged.
- Use a strain-relief or power cord grip if needed. Maintain a minimum of 3.2" (8.0 cm) bend radius for all cables.
- Use IP wet-rated junction boxes and fittings for the power cords equal to the IP rating of the rating of the lighting system for the application.
- DO NOT connect to live power until installation is complete and all connections are made.
- DO NOT modify or alter the product; doing so will void the warranty. Please refer to the Fluence Terms and Conditions and Limited Warranty for further details.
- LED and heatsink surfaces may be hot. DO NOT touch while in operation. Allow sufficient cooling time before handling.
- To reduce the risk of overheating or fire, never place operating fixtures face down on a flush surface. Always allow for adequate ventilation of fixtures and power supplies.

CAUTIONS AND WARNINGS

CHEMICAL EXPOSURE PRECAUTION

Fluence lighting systems are designed to be resilient against crop protection products. Many chemicals used in the Commercial Horticultural Industry are corrosive to electronic equipment. If the luminaire is accidentally exposed to a corrosive liquid or vapor (e.g. VOC –Volatile Organic Compound and H₂S – Hydrogen Sulfide) the luminaire must be rinsed with clean water as soon as possible. The product warranty will no longer apply if the product is exposed or remains in the corrosive environment. It is recommended the luminaires be removed and protected from the corrosive environment during all periods of disinfection or sanitization of the facility.

CALIFORNIA PROPOSITION 65 WARNING

WARNING: This product contains chemicals known to the State of California to cause cancer and birth defects or other reproductive harm. For more information: www.P65Warnings.ca.gov.

PHOTOBIOLOGICAL HAZARD SAFETY

Photobiological safety of lamps and lamp systems (IEC/EN 62471 and TR 62778). This International Standard describes the photobiological safety of lamps and lamp systems including luminaires. The rating of this product according to this standard can be found in the table below.

Regional Commercial Code	Radiation hazard - Actinic UV 200-400 nm	Radiation hazard - Retinal Blue Light (small source) 300-700 nm	Minimum viewing distance (meter/inch)	All Other Radiation Hazards
RPxBW41KSTDJVGRSTS	Exempt Group (None)	Risk Group 1 (Low)	N/A	Exempt Group (None)



ETL Rating: RAPTR fixtures are rated suitable for wet locations. A “wet location” is defined as an interior or exterior location in which water or other liquids may drip, splash or flow on or against the electrical components of a lighting fixture. RAPTR Series luminaires are certified to meet UL standards (ETL) from the Intertek safety consulting and certification company. Systems are cETL listed and are rated IP66 by IEC standard 60598-1.

CAUTIONS AND WARNINGS

Importer:

Signify Netherlands B.V.

Flight Forum 2000

5657 EX Eindhoven

The Netherlands



D Produkt zur Raumbelichtung im Haushalt nicht geeignet GB Product not suitable for domestic household lighting F Produit inadapte a l'eclairage interieur d'une habitation I Prodotto non idoneo a impianti di illuminazione domestici E Producto no adecuado para iluminacion residencial P Produto nao adequado para iluminacao domestica GR To προϊόν δεν είναι κατάλληλο για φωτισμό οικιακής χρήσης NL Product niet geschikt voor huishoudelijke verlichtingsdoeleinden S Produkten ar ej lamplig for hushallsbelysning FIN Tuotetta ei voida kayttää kotitalouksien valaisuun N Produktet er ikke egnet til a lyse opp rom med DK Produktet er ikke egnet husholdningsbelysning CZ Vyrobek není vhodný pro osvětlení domácnosti RUS Продукт не подходит для бытового освещения помещений KZ Бұл өнім үйдегі тұрмыстық жарықтандыруға жарамайды H A termék nem alkalmas háztartási világításnak PL Produkt nie jest odpowiedni do oświetlenia domowego SK Produkt nie je vhodný na osvetlenie miestnosti v domácnosti SLO Izdelek ni primeren za osvetlitev bivalnih prostorov TR Urun, ev aydınlatması için uygun değildir HR Proizvod nije prikladan za rasvjetu prostorija u kućanstvu RO Produsul nu este adecvat pentru iluminatul locuinței BG Продуктът не е подходящ за жилищно-битово осветление EST Toode ei sobi majapidamisvalgustiks LT Prietaisas neskirtas namų apšvietimui LV Produkts nav piemērots apgaismojumam mājās. SRB Proizvod nije pogodan za rasvetu u domaćinstvu UA Продукт не підходить для побутового освітлення приміщень

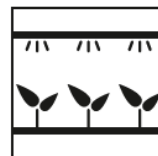


D WEEE-Gerätezeichen: Nicht in den Hausmüll werfen! Sachgerechte Entsorgung der Produkte und Verpackung nach geltendem Landesrecht vornehmen. GB WEEE device identification: Do not dispose of in domestic waste! Proper disposal of the product and packaging must be done in accordance with the applicable national law. F Identification WEEE du dispositif : ne pas jeter avec les déchets ménagers ! Le produit et son emballage doivent être éliminés conformément à la législation nationale en vigueur. I Identificazione RAEE del dispositivo: Non smaltire con i rifiuti domestici! Lo smaltimento corretto del prodotto e dell'imballaggio deve essere effettuato secondo la legge nazionale applicabile. E Identificación RAEE del dispositivo: No desechar con los residuos domésticos. El desecho adecuado del producto y el embalaje deberá llevarse a cabo de conformidad con la ley nacional aplicable. P Identificacao do dispositivo REEE: Nao deite fora no lixo domestico! A eliminacao adequada do produto e da embalagem deve ser feita em conformidade com a legislacao nacional aplicavel. GR Αναντιρροπιση συσκευής WEEE: Μην απορρίπτετε με τα οικιακά απορρίμματα! Η απόρριψη του προϊόντος και της συσκευασίας πρέπει να γίνεται σύμφωνα με την ισχύουσα εθνική νομοθεσία. NL WEE-apparaatidentificatie: niet weggoeden bij het huishoudelijke afval! Correcte verwijdering van het product en verpakking dient te gebeuren overeenkomstig de toepasselijke nationale wetgeving. S Enhetens identifikation for WEEE: Slang inte bland hushallssoopor! Produkten och forpackningen maste slangas pa ett korrekt satt i enlighet med gallande nationell lag. FIN WEEE-laitetus: Ala havita kotitalousjätteen seassa! Tuotteen ja pakkauksen asianmukainen hävittäminen on suoritettava soveltuvien paikallisten lakien mukaisesti. N WEEE Enhetsidentifikasjon: Skal ikke kastes i husholdningsavfall! Riktig avhending av produktet og emballasjen må gjøres i henhold til gjeldende nasjonale lover. DK WEEE enhedsidentifikation: Ma ikke bortskaffes med husholdningsaffald! Korrekt bortskaffelse af produktet og emballagen skal ske i overensstemmelse med gældende national lovgivning. CZ Označení zařízení podle systému WEEE: Nevyhazovat do domovního odpadu! Správná likvidace výrobku a obalu musí být provedena v souladu s platnými národními legislativními předpisy. RUS Идентификация устройства в соответствии с Директивой ЕС (WEEE) об отходах электрического и электронного оборудования: Не выбрасывайте продукт вместе с бытовыми отходами! Продукт и упаковку необходимо утилизировать надлежащим образом в соответствии с действующим национальным законодательством. KZ WEEE құрылығ идентификаторы: үй қоқысымен бірге тастамаңыз! Бұл өнім мен оның қаптамасының тасталуы қолданыстағы ұлттық заңға сай дұрыс орындалуы тиіс. H WEEE keszulek azonosito: Kommunális hulladékba helyezni tilos! A termék es a csomagolás megfelelő artalmatlanításat a hatályos nemzeti szabályozás szerint kell elvégezni. PL Identyfikacja urządzenia WEEE: Urządzenia nie wolno wyrzucać wraz ze zwykłymi odpadami domowymi! Właściwe usuwanie produktu i opakowania musi odbywać się zgodnie z obowiązującym prawem krajowym. SK Označenie zariadenia WEEE: Nelikvidujte v rámci komunálneho odpadu! Riadna likvidácia tohto produktu a obalov sa musí vykonať v súlade s národnými právnymi predpismi. SLO Identifikacija izdelka v smislu OEEO: Ne zavržite med gospodinske odpadke! Izdelek in embalažo je treba med odpadke zavreči ustrezno in v skladu z veljavno nacionalno zakonodajo. TR WEEE cihaz kimliği: Evsel atıklara dahil etmeyin! Urun ve ambalajın doğru biçimde imhasi ilgili ulusal yasaya uygun olarak gerçekleştirilmelidir. HR Oznaka WEEE na uređaju: ne odlažite u kućni otpad! Proizvod i pakiranje potrebno je ispravno odložiti u skladu s primjenjivim zakonom države. RO Identificarea dispozitivelor WEEE: Nu eliminați produsul în gunoierul menajer! Eliminarea corectă a produsului și ambalarea se vor face în conformitate cu legea națională aplicabilă. BG Идентификация на

устройството по WEEE: Да не се изхвърля с битовите отпадъци! Правилното третиране на продукта и опаковката му като отпадъци трябва да става в съответствие с приложимото национално законодателство. EST WEEE-seadme identifitseerimine: Arge visake olmejaatmetesse! Toote ja pakendite nouetekohane korvaldamine peab toimuma kooskolas kehtivate siseriiklike oigusaktidega. LT WEEE įrenginio identifikacija: nešalinti kartu su buitineis atliekomis! Gaminio ir pakuotės šalinimas turi būti atliekamas pagal šalyje galiojančius įstatymus. LV WEEE ierīces identifikācija: neizmet sadzīves atkritumos! Produkts un iepakojums jāizmet atbilstoši piemērojamam valsts likumam. SRB Identifikacija WEEE uređaja: Nemojte da odlažete u otpad iz domaćinstva! Proizvod i pakovanje morate da odložite u otpad u skladu sa važećim nacionalnim zakonom. UA Ідентифікація пристрою відповідно до Директиви ЄС (WEEE) щодо відпрацьованого електричного й електронного обладнання: Не викидайте продукт разом з іншим домашнім сміттям! Продукт та упаковку слід утилізувати належним чином відповідно до діючого національного законодавства.



D CE-Kennzeichen: Hiermit erklart OSRAM, dass dieses Produkt den grundlegenden Anforderungen und den relevanten Vorschriften der europäischen Richtlinien entspricht. GB CE marking: OSRAM declares that this product conforms with the basic requirements and relevant provisions of the European guidelines. F Marquage CE: OSRAM declare que ce produit repond aux exigences de base et aux dispositions applicables des directives europeennes. I Marchio CE: OSRAM dichiara che questo prodotto e conforme ai requisiti di base e i provvedimenti pertinenti secondo le linee guida europee. E Marca CE: OSRAM declara que este producto cumple con los requisitos basicos y las disposiciones relevantes de las directrices europeas. P Marca CE: A OSRAM declara que este produto esta em conformidade com os requisitos basicos e as disposicoes relevantes das diretrizes europeias. GR Σήμανση CE: Η OSRAM δηλώνει ότι το προϊόν αυτό συμμορφώνεται με τις βασικές απαιτήσεις και τις σχετικές διατάξεις των ευρωπαϊκών οδηγιών. NL CE-markering: OSRAM verklaart dat dit product voldoet aan de basisvereisten en relevante bepalingen van de Europese richtlijnen. S CE-markning: OSRAM tillkannager att den har produkten oppfyller de grundläggande kraven och relevanta bestämmelserna i de europeiska riktlinjerna. FIN CE-merkinta: OSRAM takaa, etta tama tuote tayttaa Eurooppalaiset perusvaatimukset ja las muuat tarkeat vaatimukset. N CE-merking: OSRAM erkl.rer at dette produktet oppfyller krav og relevante bestemmelser i de europeiske retningslinjene. DK CE-m.rkning: OSRAM erkl.rer, at dette produkt overholder de grundl.ggende krav og relevante bestemmelser i de europ.iske vejledninger. CZ Značka CE: Společnost OSRAM prohlašuje, že tento výrobek splňuje základní požadavky a ustanovení evropských směrnic. RUS Маркировка CE: компания OSRAM заявляет, что данный продукт отвечает основным требованиям и соответствующим положениям Европейских директив. KZ CE белгісі: OSRAM компаниясы бұл өнімнің Еуропалық нұсқаулықтардың негізгі талаптары мен қатысты ережелеріне сай екенін жариялайды. H CE jeloles: Az OSRAM kijelenti, hogy a termék teljesíti az Európai irányelvek alapvető követelményeit es vonatkozó előírásait. PL Oznakowanie CE: firma OSRAM oświadcza, że niniejszy produkt jest zgodny z podstawowymi wymogami i odpowiednimi postanowieniami wytycznych europejskich. SK Označenie CE: Spoločnosť OSRAM týmto deklaruje, že tento produkt vyhovuje základným požiadavkám a relevantným predpisom evropských smerníc. SLO Oznaka CE: Družba OSRAM izjavlja, da ta izdelek izpolnjuje osnovne zahteve in ustrezna določila evropskih smernic. TR CE işareti: OSRAM, bu urunun Avrupa kılavuz ilkerinin ilgili hukmleri ve temel gerekliliklerine uygun olduđunu beyan eder. HR Oznaka CE: tvrtka OSRAM ovim izjavljuje da je ovaj proizvod u skladu s osnovnim zahtjevima i relevantnim odredbama evropskih direktiva. RO Marcaj CE: OSRAM declară că acest produs respectă cerințele de bază și prevederile relevante ale standardelor europene. BG Маркировка „CE“: OSRAM декларира, че този продукт съответства на основните изисквания и приложимите разпоредби на европейските насоки. EST CE-margis: OSRAM kinnitab, et antud toode vastab Euroopa suuniste põhinouetele ja asjakohastele satetele. LT CE ženkinimas: OSRAM pareiškia, kad šis prietaisas atitinka pagrindinius Europos gairių reikalavimus ir atitinkamas nuostatas. LV CE marķējums: OSRAM paziņo, ka šis produkts atbilst Eiropas vadlīniju pamata prasībām un saistītiem nosacījumiem. SRB CE označavanje: OSRAM izjavljuje da je ovaj proizvod u saglasnosti sa osnovnim zahtevima i važećim propisima evropskih smernica. UA Маркування CE: компанія OSRAM засвідчує,



Horticulture Use



PRODUCT GUARANTEE & WARRANTY

Every Fluence Lighting system is engineered and built by Fluence Bioengineering using state-of-the-art robotics and hand craftsmanship. All Fluence Lighting systems are guaranteed against manufacturing defects for five years from date of purchase. Fluence lighting systems comply with applicable standards and are intended to be used with Fluence power supplies, cables and mounting hardware. The use of Fluence lighting systems with power supplies, cables and mounting hardware by others will limit specifications and void the warranty. Contact us at support@fluence-led.com for more warranty information.

We stand behind our research, we stand behind our technology and we stand behind our clients. <https://fluence-led.com/warranty/>



Review our products, share your grow and stay abreast of the latest Fluence news and product releases through the channels below:



www.fluence-led.com

© Copyright 2024. Fluence Bioengineering, Inc.
082024 • 100-820-01